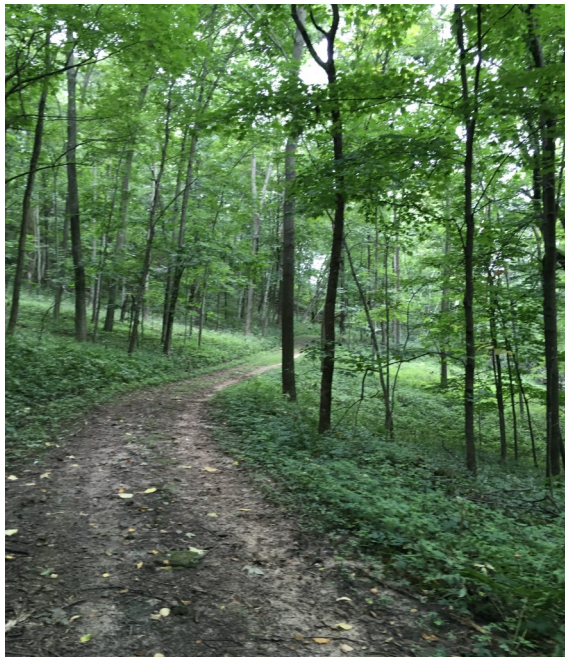




Nature Trail



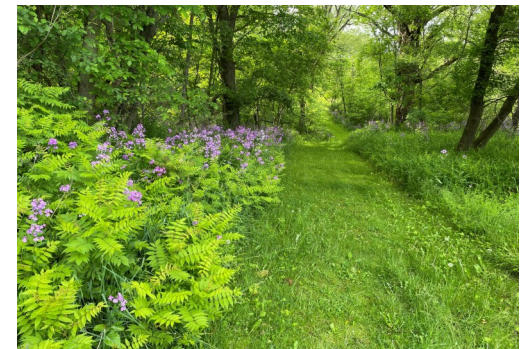
COME TAKE A HIKE!!

If you love the outdoors, Dutch Hollow Lake Nature Trail has it all for you! Whether you desire a leisurely hike through an endless meadow with abundant wildflowers, a trek up a mighty summit with glorious views of the rolling hills and lake or winding your way through the majestic woods.

The trail path is easily identified by trail markers. The trail terrain is consistent rolling hills, with some steep inclines/declines and varied terrain throughout the trail. Numbered mile markers are easily visible along the 6-mile trail. The Trail head is the DH front gate. Traveling clockwise the mile markers are designated red, traveling counter clockwise the mile markers are designated green. Trail brochures/map are available at the kiosk and the clubhouse.



Enjoy benches placed along the trail. Take a rest after climbing that steep hill. Enjoy the soaring eagles, and the swans gliding across the lake. Listen to the hammering of the woodpeckers, and the honking of the geese. Breathe in the sweet scent of the pines blowing in the gentle lake breezes all from your relaxing bench seat.



With every season the trail scenery changes. Spring and summer native wildflowers, plants, and butterflies give way to the beautiful fall colors of the maples, oaks and birch.



Winter provides a beautiful scene for hiking. The blanket of snow allows for tracking deer, rabbits, squirrels, and many year-round birds.

Help us protect and care for these special places, wildlife and plants that live here. Many animals take refuge here, search for food, & build nests just off the trail. Numerous plants call the woods and meadows home and thrive here in their native habitat.

Please stay on the trail, respect private property, and other trail users. Please Do Not Litter.

**Now Get Ready to Explore Nature
and Go Hike!!**

DUTCH HOLLOW LAKE NATURE TRAIL



No Wheeled vehicles are allowed on the trail, including: ATVs, UTVs, mopeds, scooters, any bicycle, and golf carts.

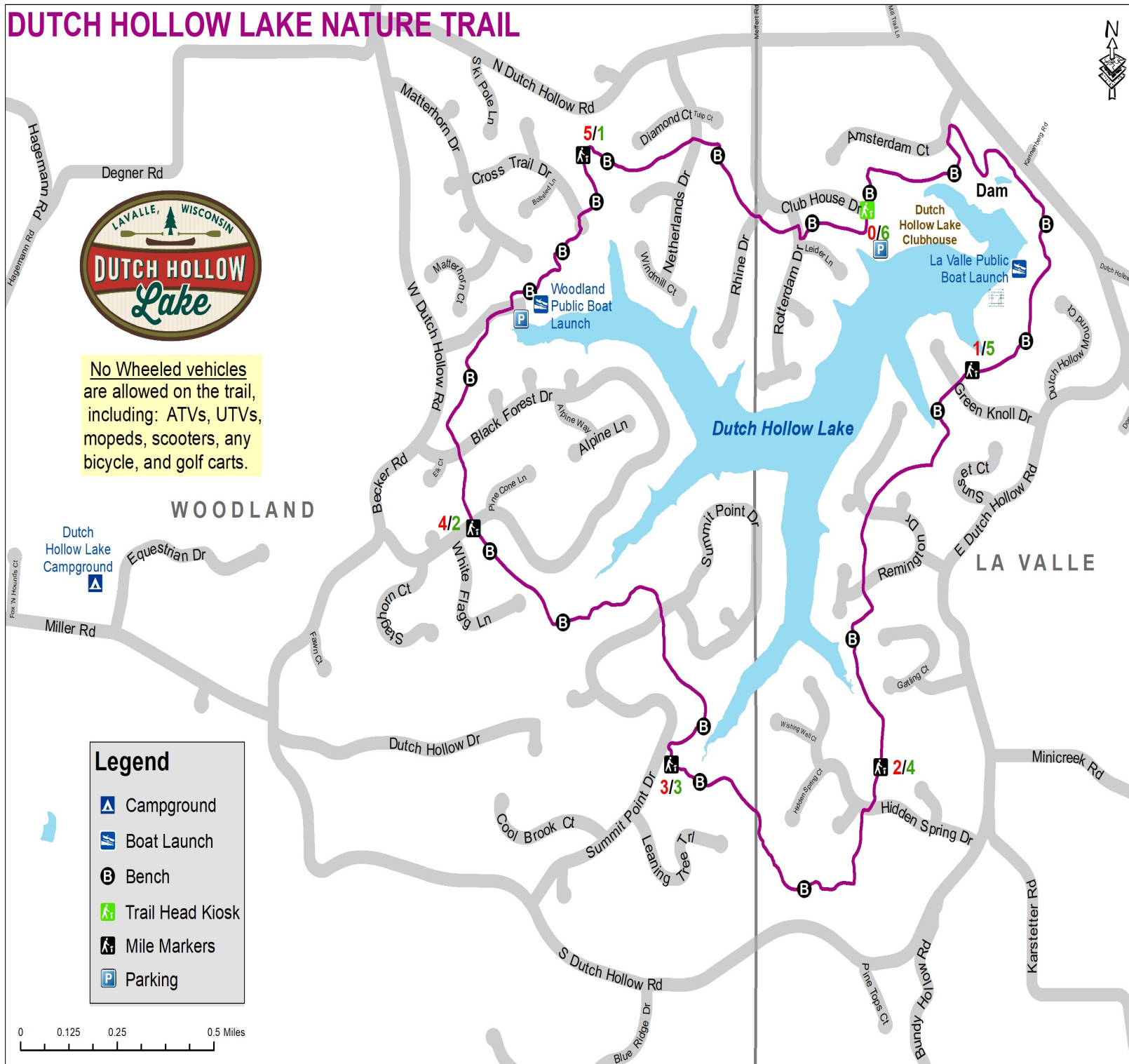
WOODLAND

LA VALLE

Legend

- Campground
- Boat Launch
- Bench
- Trail Head Kiosk
- Mile Markers
- Parking

0 0.125 0.25 0.5 Miles



Dutch Hollow Lake was developed from roughly 2500 acres of grassy hillsides and farmland by damming up Dutch Hollow Creek before it joins the Baraboo River northwest of the Village of LaValle, WI. The 6-mile trail is maintained by the Association for horseback riding and walking. **Dutch Hollow Lake Nature Trail is free and open to the public.** Dutch Hollow amenities are available with the purchase of a day pass at the Clubhouse. The public can access the trails via the Trail Head and both public boat landings. There is a minimal parking fee at the landings.

Horses. Weather permitting the trail is open to horses May 1st - November 1st, unless snow covered. The trail is closed from sunset to sunrise. Due to erosion and safety concerns, the trail closes to horses during and following rain events. The trail remains closed a minimum of 24 hours after an inch or more of rain. When in doubt, don't ride.

Dutch Hollow Lake Property Owners' Association, Inc.
 E2670 Clubhouse Drive
 LaValle, WI 53941
www.dutchhollowlake.org
 608-985-7294